



2019  
Fifth Wheel

>>> CATALOGUE





# OP^dc db

Parj conszmt yjzmp ma-o-jzn noj wr ny |jz- p~  
i-anv 2jtw~ jzn l a o |j~o |j~t "ts y{~o isjz %#  
-oj~ o^ |o-tozno jzn' ##### vtzn {p|~namp d~{~t zjw  
|oy tay |jzn jzn strs }mjw- jpo-yj~vo |j~t z  
jzro

Parj conszmt{^b~ t |j~zo~ i{ y tzy t o isot~  
{|oj i{ zjw potsi m i jzn }mjw- tv j a ||w jw p  
isot-zoon p{y {zo |jw no tz iojn {pw i {p a ||w~ p~  
oj ns ~o} at-oy ozi f o a ||w {a~ |~namp "ts oiw itm  
}mjz ito 2j~zi- 2j i novso~ ity o 2my |o it so |~no  
jzn azm znt t zjw ma i{y o~ j it p m t z

h{a~ j it p m t z t |~y t o {p Parj conszmt

\_~namp U~a |

Sa~ |ojz c~anv 2c-jtw~ jzn Pa o "ts l jzn  
\ o~no 2jz e{w{ 2onj zt 2aozj w 2Rj p 2Som 2P | " 2  
bj p 2bns y t 2a{~ 2bj o 2Zj | {s~o~ 2T~asj ap 2boij 2  
] o{ |jz 2j~a jznoim

\_~namp jzro {p Parj conszmt

Szrtzo \_j~ 2Qw ins \_j~ 2Pjvo \_j~ 2Qy |o {~jzn  
aoljt-Zt Qjw |o~aoljt-Zt 2a |oz t z \_j~ 2bioo~tr  
\_j~ 2Uoj~P{^ \_j~ 2Som~mjw j~ 2Trows^s j~ a b- ioy 2  
Ttqs f soowjzn aoljt-Zt 2jtw~ \_j~ 2jzntzr Uoj~ 2  
T~zi v aoj~O^w \_j~ 2Ttjzr 2Qj |t jzn P{n- \_j~ 2  
\_~ |ow~bsj p \_j~







၂၀၁၆ ခုနှစ်ကတည်းက မြန်မာနိုင်ငံတော်အတွက် နယ်စပ်ဒေသများတွင် ပြည်ထောင်စုအဖွဲ့အစည်းများကို တည်ထောင်ခဲ့ပြီး အခြားနိုင်ငံများသို့ ပြည်ပအင်အားစွန့်အပ်ခဲ့ပါသည်။

၂၀၁၇ ခုနှစ်ကတည်းက မြန်မာနိုင်ငံတော်အတွက် နယ်စပ်ဒေသများတွင် ပြည်ထောင်စုအဖွဲ့အစည်းများကို တည်ထောင်ခဲ့ပြီး အခြားနိုင်ငံများသို့ ပြည်ပအင်အားစွန့်အပ်ခဲ့ပါသည်။





cty o P arj consztn m | | w | { n m } m r w j z n n o w s o ~ { z i y o i s j z v i { s t r s i { n w w s o w j z n i { z r w r t i t r z p j i ~ m m a ~ o

Q { y | o i t t s o \_ t n o P arj consztn t " { ~ t r " t s y j z - m | | w ~ " t s r { { n j r ~ o o y o z i j z n p w " i s o y j ~ o i | t n o j z n o m f j w n s j z r o n z i z t m { m w j z n { t b ~ t m i y o ~ n i y t z y t j i t z z { | | { r m z t t o

# BUGATECHNIC

SPARE PARTS TRUCKS TRAILERS AND BUSES



Reached 45 countries in 5 continents

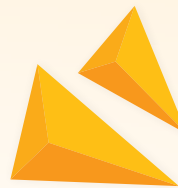


Moved Our New Place

1200 m<sup>2</sup> closed headquarter and warehouse



We extended Our team



WoeS h^ d caSR  
^ da \ ^PX S O\_\_



R{z pd r oi i{  
St t { a~ ol to







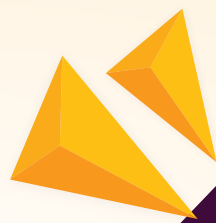
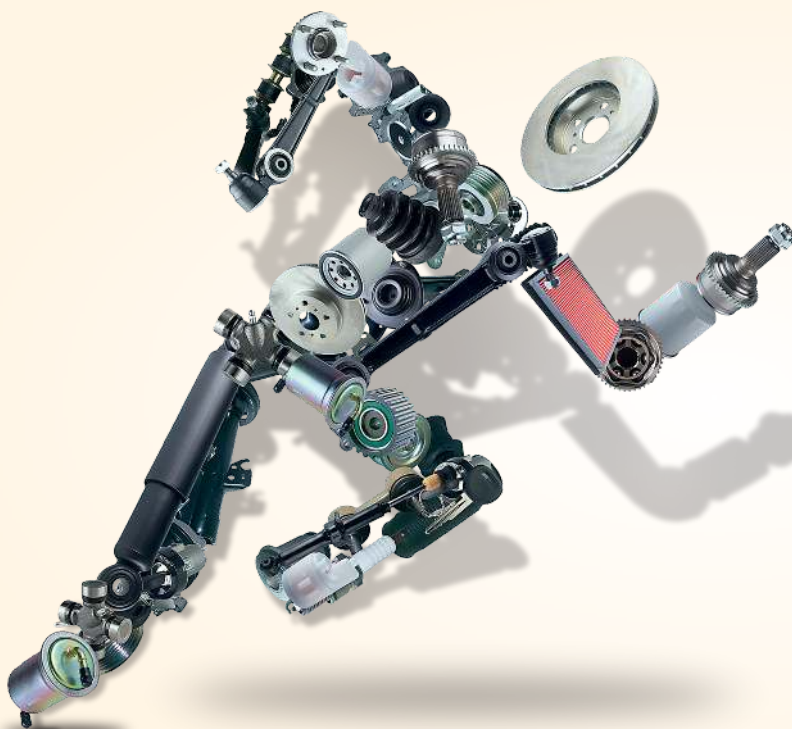
*Increased  
product range*



*Developed our  
New web site  
and mobile  
application*



*R&D Department  
Established*



**QUICK AND  
EFFECTIVE  
SOLUTION**

dgZ/ u\*p\* p NZ=u3

$D_{\alpha}$	$k p \frac{R}{\delta}$
$D_{\beta}$	$k p \frac{R}{\delta} \quad \xi Z / 3N$
$D_{\xi}$	$= < \kappa$
$D_{\alpha}$	$k p \frac{R}{\delta}$
$D_{\xi}$	$< k p \frac{R}{\delta} \quad \xi Z / 3N \quad k \kappa$ $\leftarrow \xi \sigma = \delta \sigma k$

PDF





**B14201011**

<b>DESCRIPTION</b>	FIFTH WHEEL 2"
<b>APPLICATION</b>	
<b>VEHICLE</b>	MAN MERCEDES VOLVO DAF SCANIA RENAULT
<b>OEM NO</b>	JSK 37 C



**B14201014**

<b>DESCRIPTION</b>	FIFTH WHEEL 2"(ONLY CASTING)
<b>APPLICATION</b>	
<b>VEHICLE</b>	MAN MERCEDES VOLVO DAF SCANIA RENAULT
<b>OEM NO</b>	



**B14201058**

<b>DESCRIPTION</b>	FIFTH WHEEL LOCK JAW 2"
<b>APPLICATION</b>	JSK 26,36,37,ME 140,42
<b>VEHICLE</b>	MAN MERCEDES VOLVO DAF SCANIA RENAULT
<b>OEM NO</b>	SK 3221-52



**B14201059**

<b>DESCRIPTION</b>	FIFTH WHEEL WEARING RING (3 HOLES) 2"
<b>APPLICATION</b>	JSK 26,36,37,ME 140
<b>VEHICLE</b>	MAN MERCEDES VOLVO DAF SCANIA
<b>OEM NO</b>	SK 2121-51



**B14201284**

<b>DESCRIPTION</b>	FIFTH WHEEL WEARING RING (3 HOLES) 2"
<b>APPLICATION</b>	JSK 26,36,37,ME 140
<b>VEHICLE</b>	MAN MERCEDES VOLVO DAF SCANIA
<b>OEM NO</b>	SK 2105-19



**B14201060**

<b>DESCRIPTION</b>	FIFTH WHEEL WEARING RING BOLT
<b>APPLICATION</b>	JSK 26,36,37,ME 140
<b>VEHICLE</b>	MAN MERCEDES VOLVO DAF SCANIA
<b>OEM NO</b>	SK 2121-07



**B14201047**

<b>DESCRIPTION</b>	<b>FIFTH WHEEL LOCKING BOLT 2"</b>
<b>APPLICATION</b>	JSK 26,36,37,ME 140
<b>VEHICLE</b>	MAN VOLVO SCANIA
<b>OEM NO</b>	SK 3205-06



**B14201129**

<b>DESCRIPTION</b>	<b>FIFTH WHEEL REPAIR KIT 2"</b>
<b>APPLICATION</b>	JSK 26,36,37,ME 140
<b>VEHICLE</b>	MAN VOLVO SCANIA
<b>OEM NO</b>	SK 3221-50



**B14201157**

<b>DESCRIPTION</b>	<b>FIFTH WHEEL REPAIR KIT 2"</b>
<b>APPLICATION</b>	JSK 26,36,37,ME 140
<b>VEHICLE</b>	MAN VOLVO SCANIA
<b>OEM NO</b>	



**B14201158**

<b>DESCRIPTION</b>	<b>FIFTH WHEEL REPAIR KIT 2"</b>
<b>APPLICATION</b>	JSK 26,36,37,ME 140
<b>VEHICLE</b>	MAN VOLVO SCANIA
<b>OEM NO</b>	



**B14201159**

<b>DESCRIPTION</b>	<b>FIFTH WHEEL REPAIR KIT 2"</b>
<b>APPLICATION</b>	JSK 26,36,37,ME 140
<b>VEHICLE</b>	MAN VOLVO SCANIA
<b>OEM NO</b>	



**B14201160**

<b>DESCRIPTION</b>	<b>FIFTH WHEEL REPAIR KIT 2"</b>
<b>APPLICATION</b>	JSK 26,36,37,ME 140
<b>VEHICLE</b>	MAN VOLVO SCANIA
<b>OEM NO</b>	





**B14201161**



**B14201162**

<b>DESCRIPTION</b>	FIFTH WHEEL REPAIR KIT 2"
<b>APPLICATION</b>	JSK 26,36,37,ME 140
<b>VEHICLE</b>	MAN VOLVO SCANIA
<b>OEM NO</b>	

<b>DESCRIPTION</b>	FIFTH WHEEL REPAIR KIT 2"
<b>APPLICATION</b>	JSK 26,36,37,ME 140
<b>VEHICLE</b>	MAN VOLVO SCANIA
<b>OEM NO</b>	SK 3121-50



**B14201163**



**B14201164**

<b>DESCRIPTION</b>	FIFTH WHEEL REPAIR KIT 2"
<b>APPLICATION</b>	JSK 26,36,37,ME 140
<b>VEHICLE</b>	MAN VOLVO SCANIA
<b>OEM NO</b>	SK 3121-50Z

<b>DESCRIPTION</b>	FIFTH WHEEL REPAIR KIT 2"
<b>APPLICATION</b>	JSK 26,36,37,ME 140
<b>VEHICLE</b>	MAN VOLVO SCANIA
<b>OEM NO</b>	SK 3121-51



**B14201165**



**B14201166**

<b>DESCRIPTION</b>	FIFTH WHEEL REPAIR KIT 2"
<b>APPLICATION</b>	JSK 26,36,37,ME 140
<b>VEHICLE</b>	MAN VOLVO SCANIA
<b>OEM NO</b>	SK 3121-56

<b>DESCRIPTION</b>	FIFTH WHEEL REPAIR KIT 2"
<b>APPLICATION</b>	JSK 26,36,37,ME 140
<b>VEHICLE</b>	MAN VOLVO SCANIA
<b>OEM NO</b>	SK 3121-56Z





**B14201168**



**B14201170**

<b>DESCRIPTION</b>	FIFTH WHEEL REPAIR KIT 2"
<b>APPLICATION</b>	JSK 26,36,37,ME 140
<b>VEHICLE</b>	MAN VOLVO SCANIA
<b>OEM NO</b>	SK 3221-50Z

<b>DESCRIPTION</b>	FIFTH WHEEL REPAIR KIT 2"
<b>APPLICATION</b>	JSK 26,36,37,ME 140
<b>VEHICLE</b>	MAN VOLVO SCANIA
<b>OEM NO</b>	SK 3221-52Z



**B14201171**



**B14201172**

<b>DESCRIPTION</b>	FIFTH WHEEL REPAIR KIT 2"
<b>APPLICATION</b>	JSK 26,36,37,ME 140
<b>VEHICLE</b>	MAN VOLVO SCANIA
<b>OEM NO</b>	SK 3108-05

<b>DESCRIPTION</b>	FIFTH WHEEL REPAIR KIT 2"
<b>APPLICATION</b>	JSK 26,36,37,ME 140
<b>VEHICLE</b>	MAN VOLVO SCANIA
<b>OEM NO</b>	SK 2121-69



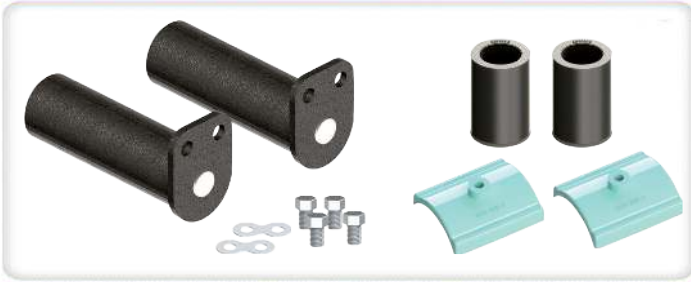
**B14201173**



**B14201174**

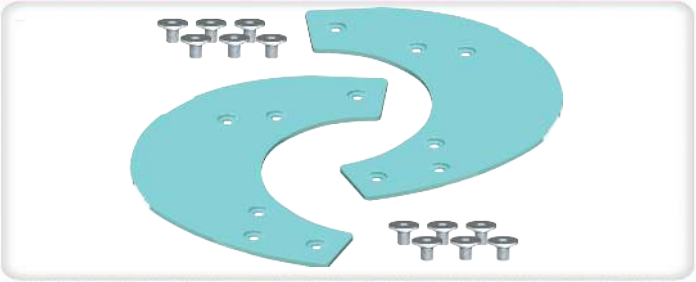
<b>DESCRIPTION</b>	FIFTH WHEEL REPAIR KIT 2"
<b>APPLICATION</b>	JSK 26,36,37,ME 140
<b>VEHICLE</b>	MAN VOLVO SCANIA
<b>OEM NO</b>	SK 3121-072Z

<b>DESCRIPTION</b>	FIFTH WHEEL REPAIR KIT 2"
<b>APPLICATION</b>	JSK 26,36,37,ME 140
<b>VEHICLE</b>	MAN VOLVO SCANIA
<b>OEM NO</b>	SK 3121-58



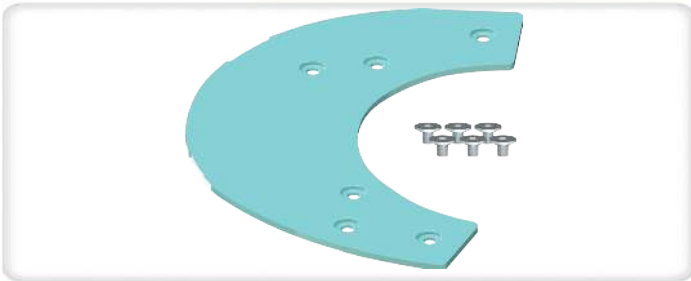
**B14201175**

<b>DESCRIPTION</b>	FIFTH WHEEL REPAIR KIT 2"
<b>APPLICATION</b>	JSK 26,36,37,ME 140
<b>VEHICLE</b>	MAN VOLVO SCANIA
<b>OEM NO</b>	SK 3121-61



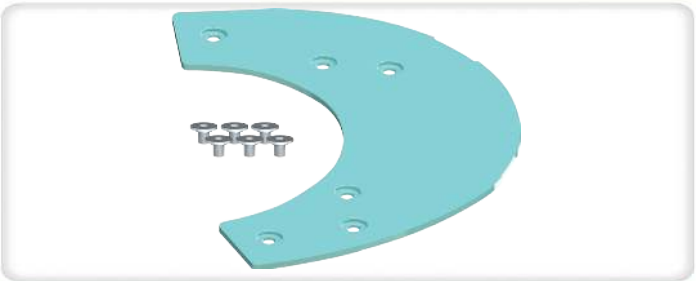
**B14201220**

<b>DESCRIPTION</b>	FIFTH WHEEL SLIDE PART
<b>APPLICATION</b>	JSK 26,36,37,ME Series
<b>VEHICLE</b>	MAN VOLVO SCANIA
<b>OEM NO</b>	SK 3106-003



**B14201225**

<b>DESCRIPTION</b>	FIFTH WHEEL SLIDE PART LEFT
<b>APPLICATION</b>	JSK 26,36,37,ME Series
<b>VEHICLE</b>	MAN VOLVO SCANIA
<b>OEM NO</b>	SK 3105-129L



**B14201226**

<b>DESCRIPTION</b>	FIFTH WHEEL SLIDE PART RIGHT
<b>APPLICATION</b>	JSK 26,36,37,ME Series
<b>VEHICLE</b>	MAN VOLVO SCANIA
<b>OEM NO</b>	SK 3105-129R



**B14201016**

<b>DESCRIPTION</b>	FIFTH WHEEL LUBRICATING KIT
<b>APPLICATION</b>	JSK 26,36,37,ME 140,42
<b>VEHICLE</b>	MAN MERCEDES VOLVO DAF SCANIA RENAULT
<b>OEM NO</b>	SK 3108-02



**B14201074**

<b>DESCRIPTION</b>	FIFTH WHEEL RUBBER CUSHION 2"
<b>APPLICATION</b>	JSK 26,36,37,ME 140
<b>VEHICLE</b>	MAN VOLVO SCANIA
<b>OEM NO</b>	





**B14201075**

<b>DESCRIPTION</b>	FIFTH WHEEL RUBBER CUSHION UPPER 2"
<b>APPLICATION</b>	JSK 26,36,37,ME 140
<b>VEHICLE</b>	MAN VOLVO SCANIA
<b>OEM NO</b>	SK 1259



**B14201076**

<b>DESCRIPTION</b>	FIFTH WHEEL RUBBER CUSHION LOWER 2"
<b>APPLICATION</b>	JSK 26,36,37,ME 140
<b>VEHICLE</b>	MAN VOLVO SCANIA
<b>OEM NO</b>	SK 2105-25



**B14201084**

<b>DESCRIPTION</b>	FIFTH WHEEL REPAIR KIT 2"
<b>APPLICATION</b>	JSK 26,36
<b>VEHICLE</b>	VOLVO
<b>OEM NO</b>	



**B14201228**

<b>DESCRIPTION</b>	FIFTH WHEEL PLASTIC PART 2"
<b>APPLICATION</b>	JSK 26,36,37,ME Series
<b>VEHICLE</b>	MAN VOLVO SCANIA
<b>OEM NO</b>	SK 3105-95



**B14201227**

<b>DESCRIPTION</b>	FIFTH WHEEL RUBBER PART 2"
<b>APPLICATION</b>	JSK 26,36,37,ME Series
<b>VEHICLE</b>	MAN VOLVO SCANIA
<b>OEM NO</b>	SK 2905-94



**B14201085**

<b>DESCRIPTION</b>	FIFTH WHEEL TENSION SPRING
<b>APPLICATION</b>	JSK 26,36,37,ME 140
<b>VEHICLE</b>	MAN MERCEDES VOLVO DAF SCANIA RENAULT
<b>OEM NO</b>	SK 3105-20





**B14201086**



**B14201088**

<b>DESCRIPTION</b>	FIFTH WHEEL LOCK JAW TENSION SPRING
<b>APPLICATION</b>	JSK 26,36,37,ME 140
<b>VEHICLE</b>	MAN MERCEDES VOLVO DAF SCANIA RENAULT
<b>OEM NO</b>	SK 847

<b>DESCRIPTION</b>	FIFTH WHEEL BRIDGE
<b>APPLICATION</b>	JSK 26,36,37,ME 140
<b>VEHICLE</b>	MAN VOLVO SCANIA
<b>OEM NO</b>	SK 1372



**B14201229**



**B14201015**

<b>DESCRIPTION</b>	FIFTH WHEEL MOUNTING BOLT
<b>APPLICATION</b>	JSK 26,36,37,ME Series
<b>VEHICLE</b>	MAN VOLVO SCANIA
<b>OEM NO</b>	SK 3104-05

<b>DESCRIPTION</b>	FIFTH WHEEL ADJUSTING SCREW
<b>APPLICATION</b>	JSK 26,36,37,ME 140
<b>VEHICLE</b>	MAN VOLVO SCANIA
<b>OEM NO</b>	SK 3105-150



**B14201017**



**B14201018**

<b>DESCRIPTION</b>	FIFTH WHEEL HANDLE
<b>APPLICATION</b>	JSK 26,36,37,ME 140
<b>VEHICLE</b>	MAN VOLVO SCANIA
<b>OEM NO</b>	SK 3105-15

<b>DESCRIPTION</b>	FIFTH WHEEL LEVER
<b>APPLICATION</b>	JSK 26,36,37,ME 140
<b>VEHICLE</b>	MAN VOLVO SCANIA
<b>OEM NO</b>	SK 3105-18



**B14201024**

<b>DESCRIPTION</b>	FIFTH WHEEL LOCK JAW BOLT
<b>APPLICATION</b>	JSK 26,36,37,ME 140,42
<b>VEHICLE</b>	MAN MERCEDES VOLVO DAF SCANIA RENAULT
<b>OEM NO</b>	SK 2106-67



**B14201230**

<b>DESCRIPTION</b>	FIFTH WHEEL LOCK JAW PIN
<b>APPLICATION</b>	JSK 26,36,37,ME Series
<b>VEHICLE</b>	MAN VOLVO SCANIA
<b>OEM NO</b>	SK 2122-04



**B14201069**

<b>DESCRIPTION</b>	FIFTH WHEEL LOCK JAW 2" (SMALL)
<b>APPLICATION</b>	JSK 26,36,37,ME 140
<b>VEHICLE</b>	VOLVO
<b>OEM NO</b>	



**B14201087**

<b>DESCRIPTION</b>	FIFTH WHEEL COUNTERSUNK BOLT
<b>APPLICATION</b>	JSK 26,36,37,ME 140
<b>VEHICLE</b>	MAN VOLVO SCANIA
<b>OEM NO</b>	SK 2121-15



**B14201177**

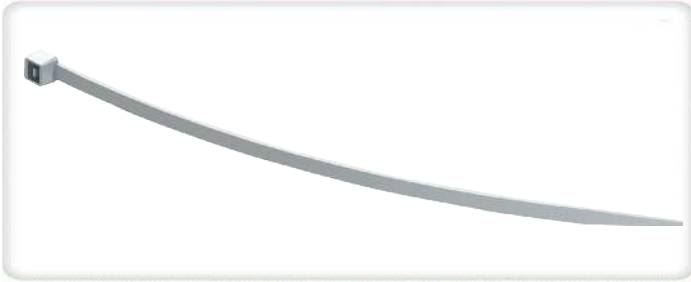
<b>DESCRIPTION</b>	FIFTH WHEEL LOCKING BOLT MOUNTING BOLT
<b>APPLICATION</b>	JSK 26,36,37,ME 140
<b>VEHICLE</b>	MAN VOLVO SCANIA
<b>OEM NO</b>	SK 3221-01



**B14201178**

<b>DESCRIPTION</b>	FIFTH WHEEL HANDLE MOUNTING BOLT
<b>APPLICATION</b>	JSK 26,36,37,ME 140
<b>VEHICLE</b>	MAN VOLVO SCANIA
<b>OEM NO</b>	SK 1513





**B14201264**

<b>DESCRIPTION</b>	FIFTH WHEEL CABLE TIE
<b>APPLICATION</b>	JSK 26,36,37,ME 140
<b>VEHICLE</b>	MAN VOLVO SCANIA
<b>OEM NO</b>	SK 3121-13



**B14201027**

<b>DESCRIPTION</b>	FIFTH WHEEL PEDESTAL H 250
<b>APPLICATION</b>	JSK 26,36,37,ME 140
<b>VEHICLE</b>	MAN VOLVO SCANIA
<b>OEM NO</b>	SK 2104-14



**B14201028**

<b>DESCRIPTION</b>	FIFTH WHEEL PEDESTAL H 210
<b>APPLICATION</b>	JSK 26,36,37,ME 140
<b>VEHICLE</b>	MAN VOLVO SCANIA
<b>OEM NO</b>	



**B14201029**

<b>DESCRIPTION</b>	FIFTH WHEEL PEDESTAL H 185
<b>APPLICATION</b>	JSK 26,36,37,ME 140
<b>VEHICLE</b>	MAN VOLVO SCANIA
<b>OEM NO</b>	SK 2104-01



**B14201030**

<b>DESCRIPTION</b>	FIFTH WHEEL PEDESTAL H 150
<b>APPLICATION</b>	JSK 26,36,37,ME 140
<b>VEHICLE</b>	MAN VOLVO SCANIA
<b>OEM NO</b>	SK 2104-02



**B14201034**

<b>DESCRIPTION</b>	FIFTH WHEEL PEDESTAL H 135
<b>APPLICATION</b>	JSK 26,36,37,ME 140
<b>VEHICLE</b>	MAN VOLVO SCANIA
<b>OEM NO</b>	





**B14201037**

<b>DESCRIPTION</b>	FIFTH WHEEL RAISING WEDGE H 50
<b>APPLICATION</b>	JSK 26,36,37,ME 140
<b>VEHICLE</b>	MERCEDES DAF RENAULT
<b>OEM NO</b>	



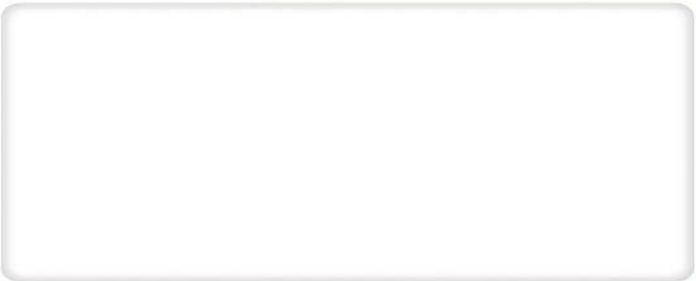
**B14201038**

<b>DESCRIPTION</b>	FIFTH WHEEL RAISING WEDGE H 40
<b>APPLICATION</b>	JSK 26,36,37,ME 140
<b>VEHICLE</b>	MERCEDES DAF RENAULT
<b>OEM NO</b>	



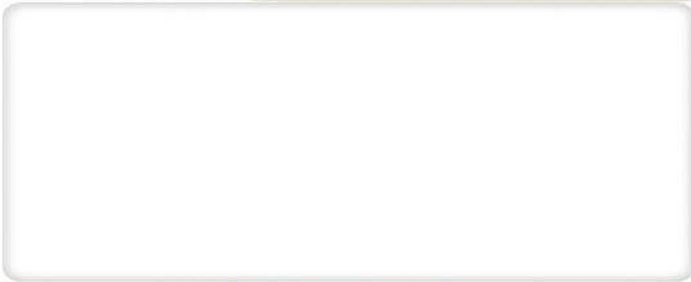
**B14201044**

<b>DESCRIPTION</b>	FIFTH WHEEL RAISING WEDGE H 30
<b>APPLICATION</b>	JSK 26,36,37,ME 140
<b>VEHICLE</b>	MAN VOLVO SCANIA
<b>OEM NO</b>	



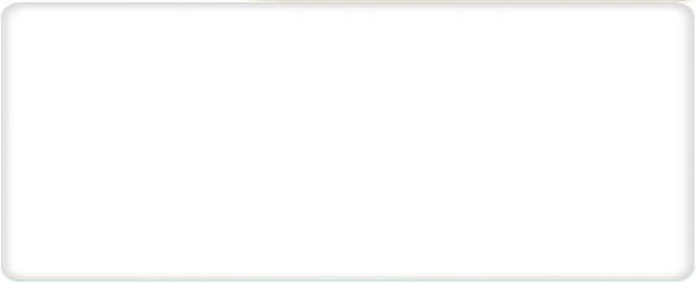
**B14201039**

<b>DESCRIPTION</b>	
<b>APPLICATION</b>	
<b>VEHICLE</b>	
<b>OEM NO</b>	



**B14201040**

<b>DESCRIPTION</b>	
<b>APPLICATION</b>	
<b>VEHICLE</b>	
<b>OEM NO</b>	



**B14201041**

<b>DESCRIPTION</b>	
<b>APPLICATION</b>	
<b>VEHICLE</b>	
<b>OEM NO</b>	



**B14201048**



**B14201242**

<b>DESCRIPTION</b>	FIFTH WHEEL LOCKING BOLT 2"
<b>APPLICATION</b>	JSK 42
<b>VEHICLE</b>	MERCEDES DAF RENAULT
<b>OEM NO</b>	SKE 0010009720

<b>DESCRIPTION</b>	FIFTH WHEEL LOCKING BOLT
<b>APPLICATION</b>	JSK 42
<b>VEHICLE</b>	DAF RENAULT MERCEDES
<b>OEM NO</b>	



**B14201058**



**B14201237**

<b>DESCRIPTION</b>	FIFTH WHEEL LOCK JAW 2"
<b>APPLICATION</b>	JSK 42
<b>VEHICLE</b>	DAF RENAULT MERCEDES
<b>OEM NO</b>	SK 3221-52

<b>DESCRIPTION</b>	FIFTH WHEEL LOCK JAW 2"
<b>APPLICATION</b>	JSK 41
<b>VEHICLE</b>	
<b>OEM NO</b>	SK 1489



**B14201223**



**B14201238**

<b>DESCRIPTION</b>	FIFTH WHEEL LOCK JAW 2"
<b>APPLICATION</b>	JSK 42
<b>VEHICLE</b>	DAF RENAULT MERCEDES
<b>OEM NO</b>	SK 1489 L

<b>DESCRIPTION</b>	FIFTH WHEEL LOCK JAW 2"
<b>APPLICATION</b>	JSK 42
<b>VEHICLE</b>	DAF RENAULT MERCEDES
<b>OEM NO</b>	SK 1489 Z





**B14201061**



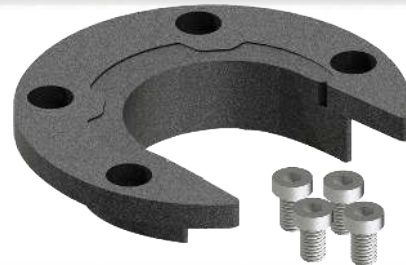
**B14201062**

<b>DESCRIPTION</b>	FIFTH WHEEL WEARING RING (4 HOLES) 2"
<b>APPLICATION</b>	JSK 42
<b>VEHICLE</b>	MERCEDES DAF RENAULT
<b>OEM NO</b>	

<b>DESCRIPTION</b>	FIFTH WHEEL WEARING RING BOLT
<b>APPLICATION</b>	JSK 42
<b>VEHICLE</b>	MERCEDES DAF RENAULT
<b>OEM NO</b>	SK 3121-55



**B14201239**



**B14201191**

<b>DESCRIPTION</b>	FIFTH WHEEL WEARING RING PLASTIC (4 HOLES)
<b>APPLICATION</b>	JSK 42
<b>VEHICLE</b>	DAF RENAULT MERCEDES
<b>OEM NO</b>	

<b>DESCRIPTION</b>	FIFTH WHEEL WEARING RING PLASTIC (4 HOLES) 2"
<b>APPLICATION</b>	JSK 42
<b>VEHICLE</b>	MERCEDES DAF RENAULT
<b>OEM NO</b>	SK 3105-94



**B14201064**



**B14201240**

<b>DESCRIPTION</b>	FIFTH WHEEL WEARING RING PART
<b>APPLICATION</b>	JSK 42
<b>VEHICLE</b>	MERCEDES DAF RENAULT
<b>OEM NO</b>	SK 3105-93

<b>DESCRIPTION</b>	FIFTH WHEEL WEARING RING (4 HOLES) 2"
<b>APPLICATION</b>	JSK 42
<b>VEHICLE</b>	DAF RENAULT MERCEDES
<b>OEM NO</b>	





**B14201065**



**B14201167**

<b>DESCRIPTION</b>	FIFTH WHEEL WEARING PART
<b>APPLICATION</b>	JSK 42
<b>VEHICLE</b>	MERCEDES DAF RENAULT
<b>OEM NO</b>	SK 3105-92

<b>DESCRIPTION</b>	FIFTH WHEEL REPAIR KIT 2"
<b>APPLICATION</b>	JSK 42
<b>VEHICLE</b>	MERCEDES DAF RENAULT
<b>OEM NO</b>	SK 3121-60Z



**B14201179**



**B14201180**

<b>DESCRIPTION</b>	FIFTH WHEEL REPAIR KIT 2"
<b>APPLICATION</b>	JSK 42
<b>VEHICLE</b>	MERCEDES DAF RENAULT
<b>OEM NO</b>	

<b>DESCRIPTION</b>	FIFTH WHEEL REPAIR KIT 2"
<b>APPLICATION</b>	JSK 42
<b>VEHICLE</b>	MERCEDES DAF RENAULT
<b>OEM NO</b>	



**B14201181**



**B14201182**

<b>DESCRIPTION</b>	FIFTH WHEEL REPAIR KIT 2"
<b>APPLICATION</b>	JSK 42
<b>VEHICLE</b>	MERCEDES DAF RENAULT
<b>OEM NO</b>	

<b>DESCRIPTION</b>	FIFTH WHEEL REPAIR KIT 2"
<b>APPLICATION</b>	JSK 42
<b>VEHICLE</b>	MERCEDES DAF RENAULT
<b>OEM NO</b>	



**B14201183**

<b>DESCRIPTION</b>	FIFTH WHEEL REPAIR KIT 2"
<b>APPLICATION</b>	JSK 42
<b>VEHICLE</b>	MERCEDES DAF RENAULT
<b>OEM NO</b>	



**B14201184**

<b>DESCRIPTION</b>	FIFTH WHEEL REPAIR KIT 2"
<b>APPLICATION</b>	JSK 42
<b>VEHICLE</b>	MERCEDES DAF RENAULT
<b>OEM NO</b>	



**B14201185**

<b>DESCRIPTION</b>	FIFTH WHEEL REPAIR KIT 2"
<b>APPLICATION</b>	JSK 42
<b>VEHICLE</b>	MERCEDES DAF RENAULT
<b>OEM NO</b>	



**B14201186**

<b>DESCRIPTION</b>	FIFTH WHEEL REPAIR KIT 2"
<b>APPLICATION</b>	JSK 42
<b>VEHICLE</b>	MERCEDES DAF RENAULT
<b>OEM NO</b>	



**B14201187**

<b>DESCRIPTION</b>	FIFTH WHEEL REPAIR KIT 2"
<b>APPLICATION</b>	JSK 42
<b>VEHICLE</b>	MERCEDES DAF RENAULT
<b>OEM NO</b>	



**B14201188**

<b>DESCRIPTION</b>	FIFTH WHEEL REPAIR KIT 2"
<b>APPLICATION</b>	JSK 42
<b>VEHICLE</b>	MERCEDES DAF RENAULT
<b>OEM NO</b>	





**B14201189**

<b>DESCRIPTION</b>	FIFTH WHEEL REPAIR KIT 2"
<b>APPLICATION</b>	JSK 42
<b>VEHICLE</b>	MERCEDES DAF RENAULT
<b>OEM NO</b>	



**B14201190**

<b>DESCRIPTION</b>	FIFTH WHEEL REPAIR KIT 2"
<b>APPLICATION</b>	JSK 42
<b>VEHICLE</b>	MERCEDES DAF RENAULT
<b>OEM NO</b>	



**B14201193**

<b>DESCRIPTION</b>	FIFTH WHEEL REPAIR KIT 2"
<b>APPLICATION</b>	JSK 42
<b>VEHICLE</b>	MERCEDES DAF RENAULT
<b>OEM NO</b>	SKE 001009720



**B14201195**

<b>DESCRIPTION</b>	FIFTH WHEEL REPAIR KIT 2"
<b>APPLICATION</b>	JSK 42
<b>VEHICLE</b>	MERCEDES DAF RENAULT
<b>OEM NO</b>	SKE 001370220



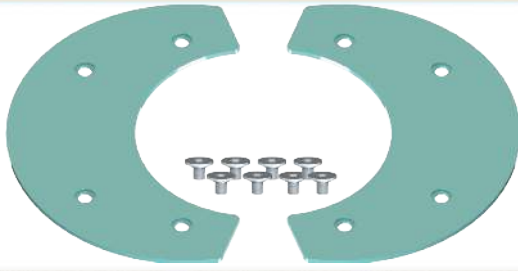
**B14201196**

<b>DESCRIPTION</b>	FIFTH WHEEL REPAIR KIT 2"
<b>APPLICATION</b>	JSK 42
<b>VEHICLE</b>	MERCEDES DAF RENAULT
<b>OEM NO</b>	SKE 001640020



**B14201197**

<b>DESCRIPTION</b>	FIFTH WHEEL REPAIR KIT 2"
<b>APPLICATION</b>	JSK 42
<b>VEHICLE</b>	MERCEDES DAF RENAULT
<b>OEM NO</b>	SKE 001740020



**B14201241**

<b>DESCRIPTION</b>	FIFTH WHEEL SLIDE PARTS
<b>APPLICATION</b>	JSK 42
<b>VEHICLE</b>	DAF RENAULT MERCEDES
<b>OEM NO</b>	SKE 001007020



**B14201077**

<b>DESCRIPTION</b>	FIFTH WHEEL REPAIR KIT 2"
<b>APPLICATION</b>	JSK 42
<b>VEHICLE</b>	MERCEDES DAF RENAULT
<b>OEM NO</b>	SKE 001370020



**B14201078**

<b>DESCRIPTION</b>	FIFTH WHEEL PLASTIC PART
<b>APPLICATION</b>	JSK 42
<b>VEHICLE</b>	MERCEDES DAF RENAULT
<b>OEM NO</b>	



**B14201079**

<b>DESCRIPTION</b>	FIFTH WHEEL RUBBER PART
<b>APPLICATION</b>	JSK 42
<b>VEHICLE</b>	MERCEDES DAF RENAULT
<b>OEM NO</b>	



**B14201012**

<b>DESCRIPTION</b>	FIFTH WHEEL COUNTERSUNK BOLT
<b>APPLICATION</b>	JSK 42
<b>VEHICLE</b>	MERCEDES DAF RENAULT
<b>OEM NO</b>	SKE 001011400



**B14201020**

<b>DESCRIPTION</b>	FIFTH WHEEL MOUNTING BOLT
<b>APPLICATION</b>	JSK 42
<b>VEHICLE</b>	MERCEDES DAF RENAULT
<b>OEM NO</b>	





**B14201031**



**B14201032**

<b>DESCRIPTION</b>	FIFTH WHEEL PEDESTAL H 185
<b>APPLICATION</b>	JSK 42
<b>VEHICLE</b>	MERCEDES DAF RENAULT
<b>OEM NO</b>	SKE 001005720

<b>DESCRIPTION</b>	FIFTH WHEEL PEDESTAL H 150
<b>APPLICATION</b>	JSK 42
<b>VEHICLE</b>	MERCEDES DAF RENAULT
<b>OEM NO</b>	SKE 001005620



**B14201035**



**B14201039**

<b>DESCRIPTION</b>	FIFTH WHEEL PEDESTAL H 135
<b>APPLICATION</b>	JSK 42
<b>VEHICLE</b>	MERCEDES DAF RENAULT
<b>OEM NO</b>	

<b>DESCRIPTION</b>	FIFTH WHEEL RAISING WEDGE H 50
<b>APPLICATION</b>	JSK 42
<b>VEHICLE</b>	MERCEDES DAF RENAULT
<b>OEM NO</b>	



**B14201040**



**B14201045**

<b>DESCRIPTION</b>	FIFTH WHEEL RAISING WEDGE H 40
<b>APPLICATION</b>	JSK 42
<b>VEHICLE</b>	MERCEDES DAF RENAULT
<b>OEM NO</b>	

<b>DESCRIPTION</b>	FIFTH WHEEL RAISING WEDGE H 30
<b>APPLICATION</b>	JSK 42
<b>VEHICLE</b>	MERCEDES DAF RENAULT
<b>OEM NO</b>	



**B14201244**



**B14201245**

<b>DESCRIPTION</b>	FIFTH WHEEL RAISING WEDGE H50
<b>APPLICATION</b>	JSK 42
<b>VEHICLE</b>	DAF RENAULT MERCEDES
<b>OEM NO</b>	

<b>DESCRIPTION</b>	FIFTH WHEEL RAISING WEDGE H40
<b>APPLICATION</b>	JSK 42
<b>VEHICLE</b>	DAF RENAULT MERCEDES
<b>OEM NO</b>	



**B14201246**

<b>DESCRIPTION</b>	FIFTH WHEEL RAISING WEDGE H30
<b>APPLICATION</b>	JSK 42
<b>VEHICLE</b>	DAF RENAULT MERCEDES
<b>OEM NO</b>	

<b>DESCRIPTION</b>	
<b>APPLICATION</b>	
<b>VEHICLE</b>	
<b>OEM NO</b>	

<b>DESCRIPTION</b>	
<b>APPLICATION</b>	
<b>VEHICLE</b>	
<b>OEM NO</b>	

<b>DESCRIPTION</b>	
<b>APPLICATION</b>	
<b>VEHICLE</b>	
<b>OEM NO</b>	

<b>DESCRIPTION</b>	
<b>APPLICATION</b>	
<b>VEHICLE</b>	
<b>OEM NO</b>	

<b>DESCRIPTION</b>	
<b>APPLICATION</b>	
<b>VEHICLE</b>	
<b>OEM NO</b>	





**B14201066**

<b>DESCRIPTION</b>	FIFTH WHEEL LOCK JAW 2"
<b>APPLICATION</b>	GF SK-S
<b>VEHICLE</b>	VOLVO
<b>OEM NO</b>	662 129 134



**B14201067**

<b>DESCRIPTION</b>	FIFTH WHEEL WEARING RING 2"
<b>APPLICATION</b>	GF SK-S
<b>VEHICLE</b>	VOLVO
<b>OEM NO</b>	662 101 566



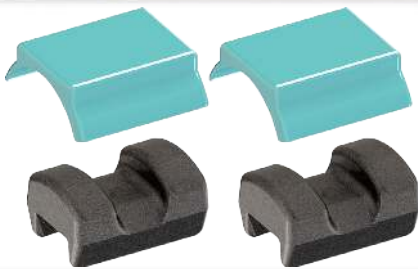
**B14201249**

<b>DESCRIPTION</b>	FIFTH WHEEL WEARING RING 2"
<b>APPLICATION</b>	GF SK-S
<b>VEHICLE</b>	VOLVO
<b>OEM NO</b>	662 101 562



**B14201250**

<b>DESCRIPTION</b>	FIFTH WHEEL WEARING RING 2"
<b>APPLICATION</b>	GF SK-S
<b>VEHICLE</b>	VOLVO
<b>OEM NO</b>	662 101 338



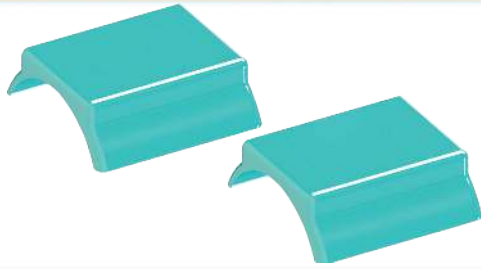
**B14201080**

<b>DESCRIPTION</b>	FIFTH WHEEL REPAIR KIT
<b>APPLICATION</b>	GF SK-S
<b>VEHICLE</b>	VOLVO
<b>OEM NO</b>	



**B14201081**

<b>DESCRIPTION</b>	FIFTH WHEEL RUBBER PART
<b>APPLICATION</b>	GF SK-S
<b>VEHICLE</b>	VOLVO
<b>OEM NO</b>	662 114 110



**B14201082**

<b>DESCRIPTION</b>	FIFTH WHEEL PLASTIC PART
<b>APPLICATION</b>	GF SK-S
<b>VEHICLE</b>	VOLVO
<b>OEM NO</b>	662 130 101



**B14201256**

<b>DESCRIPTION</b>	FIFTH WHEEL COUNTERSUNK BOLT
<b>APPLICATION</b>	GF SK-S
<b>VEHICLE</b>	VOLVO
<b>OEM NO</b>	662 129 606



**B14201257**

<b>DESCRIPTION</b>	FIFTH WHEEL COUNTERSUNK BOLT
<b>APPLICATION</b>	GF SK-S
<b>VEHICLE</b>	VOLVO
<b>OEM NO</b>	659 112 365



**B14201251**

<b>DESCRIPTION</b>	FIFTH WHEEL LOCKING BOLT 2"
<b>APPLICATION</b>	GF SK-S
<b>VEHICLE</b>	VOLVO
<b>OEM NO</b>	662 129 381



**B14201216**

<b>DESCRIPTION</b>	FIFTH WHEEL REPAIR KIT 2"
<b>APPLICATION</b>	GF SK-S
<b>VEHICLE</b>	VOLVO
<b>OEM NO</b>	662 101 492



**B14201217**

<b>DESCRIPTION</b>	FIFTH WHEEL REPAIR KIT 2"
<b>APPLICATION</b>	GF SK-S
<b>VEHICLE</b>	VOLVO
<b>OEM NO</b>	662 101 493





**B14201247**

<b>DESCRIPTION</b>	FIFTH WHEEL REPAIR KIT 2"
<b>APPLICATION</b>	GF SK-S
<b>VEHICLE</b>	VOLVO
<b>OEM NO</b>	662 101 516



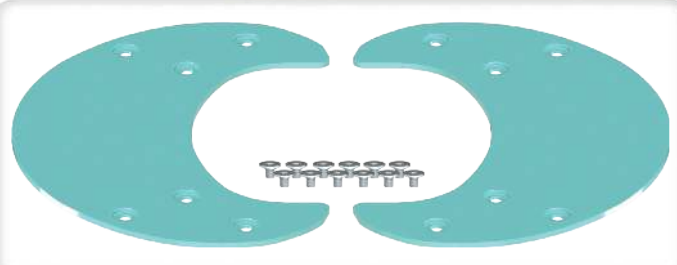
**B14201219**

<b>DESCRIPTION</b>	FIFTH WHEEL REPAIR KIT 2"
<b>APPLICATION</b>	GF SK-S
<b>VEHICLE</b>	VOLVO
<b>OEM NO</b>	662 101 473



**B14201248**

<b>DESCRIPTION</b>	FIFTH WHEEL REPAIR KIT 2"
<b>APPLICATION</b>	GF SK-S
<b>VEHICLE</b>	DAF RENAULT MERCEDES
<b>OEM NO</b>	662 101 518



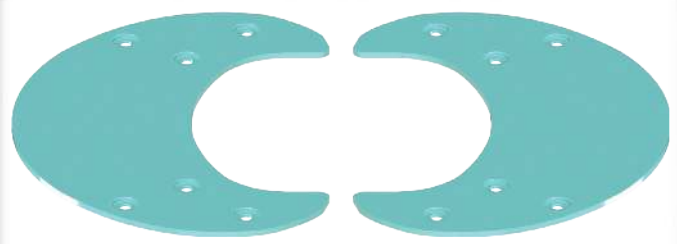
**B14201253**

<b>DESCRIPTION</b>	FIFTH WHEEL SLIDE PARTS
<b>APPLICATION</b>	GF SK-S
<b>VEHICLE</b>	VOLVO
<b>OEM NO</b>	662 101 469



**B14201255**

<b>DESCRIPTION</b>	FIFTH WHEEL SLIDE PART BOLT
<b>APPLICATION</b>	GF SK-S
<b>VEHICLE</b>	VOLVO
<b>OEM NO</b>	662 130 114



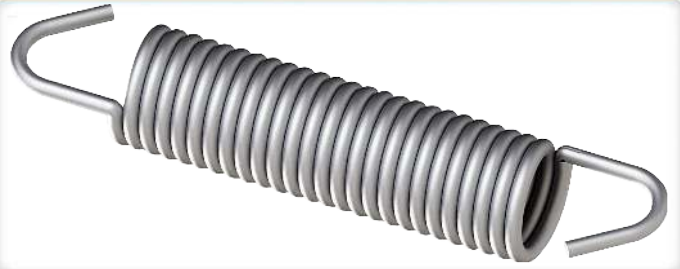
**B14201254**

<b>DESCRIPTION</b>	FIFTH WHEEL SLIDE PARTS WITHOUT BOLT
<b>APPLICATION</b>	GF SK-S
<b>VEHICLE</b>	VOLVO
<b>OEM NO</b>	662 131 103



**B14201013**

<b>DESCRIPTION</b>	FIFTH WHEEL LOCK JAW PIN
<b>APPLICATION</b>	GF SK-S
<b>VEHICLE</b>	VOLVO
<b>OEM NO</b>	662 129 375



**B14201258**

<b>DESCRIPTION</b>	FIFTH WHEEL LOCK JAW SPRING
<b>APPLICATION</b>	GF SK-S
<b>VEHICLE</b>	VOLVO
<b>OEM NO</b>	662 126 411



**B14201068**

<b>DESCRIPTION</b>	FIFTH WHEEL WEARING RING BOLT
<b>APPLICATION</b>	GF SK-S
<b>VEHICLE</b>	VOLVO
<b>OEM NO</b>	659 112 372



**B14201041**

<b>DESCRIPTION</b>	FIFTH WHEEL RAISING WEDGE H 50
<b>APPLICATION</b>	GF SK-S
<b>VEHICLE</b>	VOLVO
<b>OEM NO</b>	



**B14201042**

<b>DESCRIPTION</b>	FIFTH WHEEL RAISING WEDGE H 40
<b>APPLICATION</b>	GF SK-S
<b>VEHICLE</b>	VOLVO
<b>OEM NO</b>	



**B14201046**

<b>DESCRIPTION</b>	FIFTH WHEEL RAISING WEDGE H 30
<b>APPLICATION</b>	GF SK-S
<b>VEHICLE</b>	VOLVO
<b>OEM NO</b>	





**B14201000**



**B14201009**

<b>DESCRIPTION</b>	FIFTH WHEEL ARTICULATION 3,5" / 2"
<b>APPLICATION</b>	
<b>VEHICLE</b>	MAN MERCEDES VOLVO DAF SCANIA RENAULT
<b>OEM NO</b>	JSK 38 G1

<b>DESCRIPTION</b>	FIFTH WHEEL 3,5"
<b>APPLICATION</b>	
<b>VEHICLE</b>	MAN MERCEDES VOLVO DAF SCANIA RENAULT
<b>OEM NO</b>	JSK 38 C1



**B14201010**



**B14201049**

<b>DESCRIPTION</b>	FIFTH WHEEL 3,5"
<b>APPLICATION</b>	JSK 38,50
<b>VEHICLE</b>	MAN MERCEDES VOLVO DAF SCANIA RENAULT
<b>OEM NO</b>	SK 2404-05

<b>DESCRIPTION</b>	FIFTH WHEEL LOCKING BOLT 3,5"
<b>APPLICATION</b>	JSK 38,50
<b>VEHICLE</b>	MAN MERCEDES VOLVO DAF SCANIA RENAULT
<b>OEM NO</b>	SK 2405-01



**B14201053**



**B14201272**

<b>DESCRIPTION</b>	FIFTH WHEEL LOCK JAW 3,5"
<b>APPLICATION</b>	JSK 38,50
<b>VEHICLE</b>	MAN MERCEDES VOLVO DAF SCANIA RENAULT
<b>OEM NO</b>	SK 2405-14

<b>DESCRIPTION</b>	FIFTH WHEEL LOCK JAW 3,5"
<b>APPLICATION</b>	JSK 38,50
<b>VEHICLE</b>	MAN MERCEDES VOLVO DAF SCANIA RENAULT
<b>OEM NO</b>	SK 2405-14 Z



**B14201054**



**B14201055**

<b>DESCRIPTION</b>	FIFTH WHEEL WEARING RING 3,5"
<b>APPLICATION</b>	JSK 38,50
<b>VEHICLE</b>	MAN MERCEDES VOLVO DAF SCANIA RENAULT
<b>OEM NO</b>	SK 2421-56

<b>DESCRIPTION</b>	FIFTH WHEEL WEARING RING BOLT
<b>APPLICATION</b>	JSK 38,50
<b>VEHICLE</b>	MAN MERCEDES VOLVO DAF SCANIA RENAULT
<b>OEM NO</b>	SK 2421-08



**B14201056**



**B14201057**

<b>DESCRIPTION</b>	FIFTH WHEEL LOCK JAW 3,5" / 2"
<b>APPLICATION</b>	JSK 38,50
<b>VEHICLE</b>	MAN MERCEDES VOLVO DAF SCANIA RENAULT
<b>OEM NO</b>	SK 2405-13

<b>DESCRIPTION</b>	FIFTH WHEEL WEARING RING 3,5" / 2"
<b>APPLICATION</b>	JSK 38,50
<b>VEHICLE</b>	MAN MERCEDES VOLVO DAF SCANIA RENAULT
<b>OEM NO</b>	SK 2421-57



**B14201071**



**B14201072**

<b>DESCRIPTION</b>	FIFTH WHEEL RUBBER CUSHION 3,5"
<b>APPLICATION</b>	JSK 38,50
<b>VEHICLE</b>	MAN MERCEDES VOLVO DAF SCANIA RENAULT
<b>OEM NO</b>	

<b>DESCRIPTION</b>	FIFTH WHEEL RUBBER PART (UPPER)
<b>APPLICATION</b>	JSK 38,50
<b>VEHICLE</b>	MAN MERCEDES VOLVO DAF SCANIA RENAULT
<b>OEM NO</b>	SK 2006





**B14201073**

<b>DESCRIPTION</b>	FIFTH WHEEL RUBBER PART (LOWER)
<b>APPLICATION</b>	JSK 38,50
<b>VEHICLE</b>	MAN MERCEDES VOLVO DAF SCANIA RENAULT
<b>OEM NO</b>	SK 2007



**B14201198**

<b>DESCRIPTION</b>	FIFTH WHEEL REPAIR KIT 2"
<b>APPLICATION</b>	JSK 38,50
<b>VEHICLE</b>	MAN MERCEDES VOLVO DAF SCANIA RENAULT
<b>OEM NO</b>	SK 2421-98



**B14201259**

<b>DESCRIPTION</b>	FIFTH WHEEL REPAIR KIT 3,5
<b>APPLICATION</b>	JSK 38,50
<b>VEHICLE</b>	MAN MERCEDES VOLVO DAF SCANIA RENAULT
<b>OEM NO</b>	SK 2421-98 Z



**B14201199**

<b>DESCRIPTION</b>	FIFTH WHEEL REPAIR KIT 3,5"
<b>APPLICATION</b>	JSK 38,50
<b>VEHICLE</b>	MAN MERCEDES VOLVO DAF SCANIA RENAULT
<b>OEM NO</b>	



**B14201200**

<b>DESCRIPTION</b>	FIFTH WHEEL REPAIR KIT 3,5"
<b>APPLICATION</b>	JSK 38,50
<b>VEHICLE</b>	MAN MERCEDES VOLVO DAF SCANIA RENAULT
<b>OEM NO</b>	



**B14201201**

<b>DESCRIPTION</b>	FIFTH WHEEL REPAIR KIT 3,5"
<b>APPLICATION</b>	JSK 38,50
<b>VEHICLE</b>	MAN MERCEDES VOLVO DAF SCANIA RENAULT
<b>OEM NO</b>	



**B14201202**



**B14201203**

<b>DESCRIPTION</b>	FIFTH WHEEL REPAIR KIT 3,5"
<b>APPLICATION</b>	JSK 38,50
<b>VEHICLE</b>	MAN MERCEDES VOLVO DAF SCANIA RENAULT
<b>OEM NO</b>	

<b>DESCRIPTION</b>	FIFTH WHEEL REPAIR KIT 3,5"
<b>APPLICATION</b>	JSK 38,50
<b>VEHICLE</b>	MAN MERCEDES VOLVO DAF SCANIA RENAULT
<b>OEM NO</b>	



**B14201204**



**B14201205**

<b>DESCRIPTION</b>	FIFTH WHEEL REPAIR KIT 3,5"
<b>APPLICATION</b>	JSK 38,50
<b>VEHICLE</b>	MAN MERCEDES VOLVO DAF SCANIA RENAULT
<b>OEM NO</b>	SK 2421-76

<b>DESCRIPTION</b>	FIFTH WHEEL REPAIR KIT 3,5"
<b>APPLICATION</b>	JSK 38,50
<b>VEHICLE</b>	MAN MERCEDES VOLVO DAF SCANIA RENAULT
<b>OEM NO</b>	SK 2421-76Z



**B14201206**



**B14201207**

<b>DESCRIPTION</b>	FIFTH WHEEL REPAIR KIT 3,5- 2"
<b>APPLICATION</b>	JSK 38,50
<b>VEHICLE</b>	MAN MERCEDES VOLVO DAF SCANIA RENAULT
<b>OEM NO</b>	SK 2421-77

<b>DESCRIPTION</b>	FIFTH WHEEL REPAIR KIT 3,5- 2"
<b>APPLICATION</b>	JSK 38,50
<b>VEHICLE</b>	MAN MERCEDES VOLVO DAF SCANIA RENAULT
<b>OEM NO</b>	SK 2421-77Z





**B14201288**

<b>DESCRIPTION</b>	FIFTH WHEEL REPAIR KIT
<b>APPLICATION</b>	JSK 38,50
<b>VEHICLE</b>	MAN MERCEDES VOLVO DAF SCANIA RENAULT
<b>OEM NO</b>	SK 3121-063



**B14201208**

<b>DESCRIPTION</b>	FIFTH WHEEL REPAIR KIT 3,5-2"
<b>APPLICATION</b>	JSK 38,50
<b>VEHICLE</b>	MAN MERCEDES VOLVO DAF SCANIA RENAULT
<b>OEM NO</b>	SK 2421-99



**B14201260**

<b>DESCRIPTION</b>	FIFTH WHEEL REPAIR KIT 3,5-2"
<b>APPLICATION</b>	JSK 38,50
<b>VEHICLE</b>	MAN MERCEDES VOLVO DAF SCANIA RENAULT
<b>OEM NO</b>	SK 2421-99 Z



**B14201209**

<b>DESCRIPTION</b>	FIFTH WHEEL REPAIR KIT 3,5-2"
<b>APPLICATION</b>	JSK 38,50
<b>VEHICLE</b>	MAN MERCEDES VOLVO DAF SCANIA RENAULT
<b>OEM NO</b>	



**B14201210**

<b>DESCRIPTION</b>	FIFTH WHEEL REPAIR KIT 3,5-2"
<b>APPLICATION</b>	JSK 38,50
<b>VEHICLE</b>	MAN MERCEDES VOLVO DAF SCANIA RENAULT
<b>OEM NO</b>	



**B14201211**

<b>DESCRIPTION</b>	FIFTH WHEEL REPAIR KIT 3,5-2"
<b>APPLICATION</b>	JSK 38,50
<b>VEHICLE</b>	MAN MERCEDES VOLVO DAF SCANIA RENAULT
<b>OEM NO</b>	



**B14201212**

<b>DESCRIPTION</b>	FIFTH WHEEL REPAIR KIT 3,5-2"
<b>APPLICATION</b>	JSK 38,50
<b>VEHICLE</b>	MAN MERCEDES VOLVO DAF SCANIA RENAULT
<b>OEM NO</b>	



**B14201213**

<b>DESCRIPTION</b>	FIFTH WHEEL REPAIR KIT 3,5-2"
<b>APPLICATION</b>	JSK 38,50
<b>VEHICLE</b>	MAN MERCEDES VOLVO DAF SCANIA RENAULT
<b>OEM NO</b>	



**B14201214**

<b>DESCRIPTION</b>	FIFTH WHEEL REPAIR KIT 3,5"
<b>APPLICATION</b>	JSK 38,50
<b>VEHICLE</b>	MAN MERCEDES VOLVO DAF SCANIA RENAULT
<b>OEM NO</b>	SK 2421-78



**B14201215**

<b>DESCRIPTION</b>	FIFTH WHEEL COUNTERSUNK BOLT
<b>APPLICATION</b>	JSK 38,50
<b>VEHICLE</b>	MAN MERCEDES VOLVO DAF SCANIA RENAULT
<b>OEM NO</b>	SK 2421-55



**B14201273**

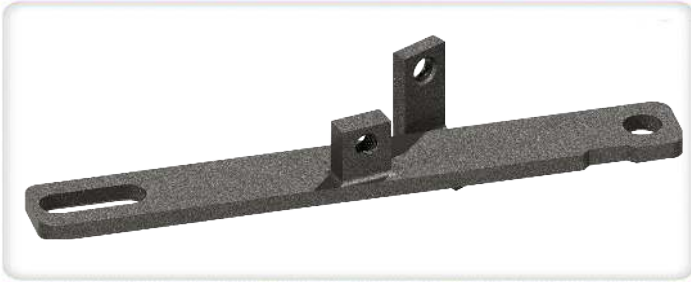
<b>DESCRIPTION</b>	FIFTH WHEEL LOCK JAW 3.5"-2"
<b>APPLICATION</b>	JSK 38,50
<b>VEHICLE</b>	MAN MERCEDES VOLVO DAF SCANIA RENAULT
<b>OEM NO</b>	SK 2405-13 Z



**B14201296**

<b>DESCRIPTION</b>	FIFTH WHEEL HANDLE
<b>APPLICATION</b>	JSK 38,50
<b>VEHICLE</b>	MAN MERCEDES VOLVO DAF SCANIA RENAULT
<b>OEM NO</b>	SK 2405-066





**B14201297**

<b>DESCRIPTION</b>	FIFTH WHEEL LEVER
<b>APPLICATION</b>	JSK 38,50
<b>VEHICLE</b>	MAN MERCEDES VOLVO DAF SCANIA RENAULT
<b>OEM NO</b>	SK 2405-04



**B14201283**

<b>DESCRIPTION</b>	FIFTH WHEEL PEDESTAL H190
<b>APPLICATION</b>	JSK 38,50
<b>VEHICLE</b>	MAN MERCEDES VOLVO DAF SCANIA RENAULT
<b>OEM NO</b>	SK 2404-01



**B14201298**

<b>DESCRIPTION</b>	FIFTH WHEEL LOCKING BOLT PIN
<b>APPLICATION</b>	JSK 38,50
<b>VEHICLE</b>	MAN MERCEDES VOLVO DAF SCANIA RENAULT
<b>OEM NO</b>	SK 2121-14



**B14201299**

<b>DESCRIPTION</b>	FIFTH WHEEL LOCKING BOLT SPARE PART
<b>APPLICATION</b>	JSK 38,50
<b>VEHICLE</b>	MAN MERCEDES VOLVO DAF SCANIA RENAULT
<b>OEM NO</b>	SK 2405-19



**B14201300**

<b>DESCRIPTION</b>	FIFTH WHEEL LOCKING BOLT SPARE PART
<b>APPLICATION</b>	JSK 38,50
<b>VEHICLE</b>	MAN MERCEDES VOLVO DAF SCANIA RENAULT
<b>OEM NO</b>	



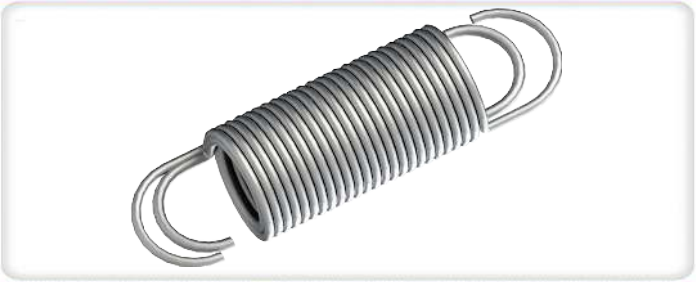
**B14201236**

<b>DESCRIPTION</b>	FIFTH WHEEL SPARE PART
<b>APPLICATION</b>	JSK 38,50
<b>VEHICLE</b>	MAN MERCEDES VOLVO DAF SCANIA RENAULT
<b>OEM NO</b>	SK 1436



**B14201301**

<b>DESCRIPTION</b>	FIFTH WHEEL SPARE PART
<b>APPLICATION</b>	JSK 38,50
<b>VEHICLE</b>	MAN MERCEDES VOLVO DAF SCANIA RENAULT
<b>OEM NO</b>	SK 3521-02



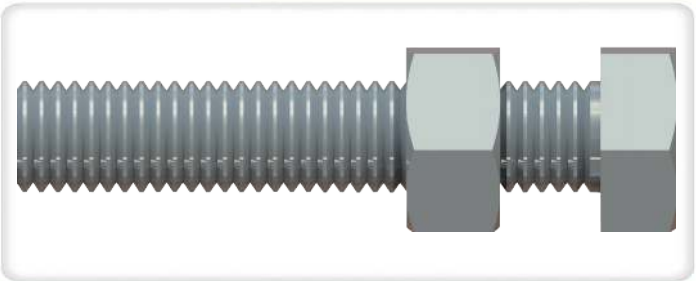
**B14201302**

<b>DESCRIPTION</b>	FIFTH WHEEL TENSION SPRING
<b>APPLICATION</b>	JSK 38,50
<b>VEHICLE</b>	MAN MERCEDES VOLVO DAF SCANIA RENAULT
<b>OEM NO</b>	SK 2405-23



**B14201303**

<b>DESCRIPTION</b>	FIFTH WHEEL LOCK JAW PIN (Ø20)
<b>APPLICATION</b>	JSK 38,50
<b>VEHICLE</b>	MAN MERCEDES VOLVO DAF SCANIA RENAULT
<b>OEM NO</b>	SK 2405-18



**B14201304**

<b>DESCRIPTION</b>	FIFTH WHEEL ADJUSTING SCREW (M14*70)
<b>APPLICATION</b>	JSK 38,50
<b>VEHICLE</b>	MAN MERCEDES VOLVO DAF SCANIA RENAULT
<b>OEM NO</b>	SK 2421-52



**B14201305**

<b>DESCRIPTION</b>	FIFTH WHEEL LEVER PART
<b>APPLICATION</b>	JSK 38,50
<b>VEHICLE</b>	MAN MERCEDES VOLVO DAF SCANIA RENAULT
<b>OEM NO</b>	SK 2405-15



**B14201306**

<b>DESCRIPTION</b>	FIFTH WHEEL LEVER PART (M12*25)
<b>APPLICATION</b>	JSK 38,50
<b>VEHICLE</b>	MAN MERCEDES VOLVO DAF SCANIA RENAULT
<b>OEM NO</b>	SK 2421-53





**B14201307**

<b>DESCRIPTION</b>	FIFTH WHEEL LATCH
<b>APPLICATION</b>	JSK 38,50
<b>VEHICLE</b>	MAN MERCEDES VOLVO DAF SCANIA RENAULT
<b>OEM NO</b>	SK 2405-27



**B14201282**

<b>DESCRIPTION</b>	FIFTH WHEEL BRIDGE
<b>APPLICATION</b>	JSK 38,50
<b>VEHICLE</b>	MAN VOLVO MERCEDES DAF SCANIA RENAULT
<b>OEM NO</b>	SK 2005



**B14201308**

<b>DESCRIPTION</b>	FIFTH WHEEL SPARE PART (10MM)
<b>APPLICATION</b>	JSK 38,50
<b>VEHICLE</b>	MAN MERCEDES VOLVO DAF SCANIA RENAULT
<b>OEM NO</b>	SK 2504-14



**B14201279**

<b>DESCRIPTION</b>	FIFTH WHEEL SPARE PART (Ø95)
<b>APPLICATION</b>	JSK 38,50
<b>VEHICLE</b>	MAN MERCEDES VOLVO DAF SCANIA RENAULT
<b>OEM NO</b>	SK 2521-07



**B14201309**

<b>DESCRIPTION</b>	FIFTH WHEEL SPARE PART (M12*20)
<b>APPLICATION</b>	JSK 38,50
<b>VEHICLE</b>	MAN MERCEDES VOLVO DAF SCANIA RENAULT
<b>OEM NO</b>	SK 1533



**B14201310**

<b>DESCRIPTION</b>	FIFTH WHEEL SPARE PART (M8*1)
<b>APPLICATION</b>	JSK 38,50
<b>VEHICLE</b>	MAN MERCEDES VOLVO DAF SCANIA RENAULT
<b>OEM NO</b>	SK 2521-04



**B14201311**

<b>DESCRIPTION</b>	FIFTH WHEEL SPARE PART (8MM)
<b>APPLICATION</b>	JSK 38,50
<b>VEHICLE</b>	MAN MERCEDES VOLVO DAF SCANIA RENAULT
<b>OEM NO</b>	SK 1192/1



**B14201262**

<b>DESCRIPTION</b>	FIFTH WHEEL SPARE PART
<b>APPLICATION</b>	JSK 38,50
<b>VEHICLE</b>	MAN MERCEDES VOLVO DAF SCANIA RENAULT
<b>OEM NO</b>	SK 1435



**B14201265**

<b>DESCRIPTION</b>	FIFTH WHEELSPARE PART (M20)
<b>APPLICATION</b>	JSK 38,50
<b>VEHICLE</b>	MAN MERCEDES VOLVO DAF SCANIA RENAULT
<b>OEM NO</b>	SK 2504-20



**B14201312**

<b>DESCRIPTION</b>	FIFTH WHEEL MOUNTING (M16*45)
<b>APPLICATION</b>	JSK 38,50
<b>VEHICLE</b>	MAN MERCEDES VOLVO DAF SCANIA RENAULT
<b>OEM NO</b>	SK 2410-019



**B14201313**

<b>DESCRIPTION</b>	FIFTH WHEEL SPARE PART (M10*25)
<b>APPLICATION</b>	JSK 38,50
<b>VEHICLE</b>	MAN MERCEDES VOLVO DAF SCANIA RENAULT
<b>OEM NO</b>	SK 2521-50



**B14201033**

<b>DESCRIPTION</b>	FIFTH WHEEL PEDESTAL H190
<b>APPLICATION</b>	JSK 38,50
<b>VEHICLE</b>	MAN MERCEDES VOLVO DAF SCANIA RENAULT
<b>OEM NO</b>	





**B14201051**

<b>DESCRIPTION</b>	FIFTH WHEEL WEARING RING 2" (2 HOLES)
<b>APPLICATION</b>	JSK 38,50
<b>VEHICLE</b>	MAN MERCEDES VOLVO DAF SCANIA RENAULT
<b>OEM NO</b>	



**B14201130**

<b>DESCRIPTION</b>	CONTAINER MOUNTING PART LEFT
<b>APPLICATION</b>	JSK 38,50
<b>VEHICLE</b>	MAN MERCEDES VOLVO DAF SCANIA RENAULT
<b>OEM NO</b>	



**B14201266**

<b>DESCRIPTION</b>	FIFTH WHEEL LATCH SPRING (Ø20)
<b>APPLICATION</b>	JSK 38,50
<b>VEHICLE</b>	MAN MERCEDES VOLVO DAF SCANIA RENAULT
<b>OEM NO</b>	SK 2106-01



**B14201001**

<b>DESCRIPTION</b>	FIFTH WHEEL HANDLE
<b>APPLICATION</b>	JSK 38,50
<b>VEHICLE</b>	MAN MERCEDES VOLVO DAF SCANIA RENAULT
<b>OEM NO</b>	SK 2521-51



**B14201002**

<b>DESCRIPTION</b>	FIFTH WHEEL HANDLE LEVER
<b>APPLICATION</b>	JSK 38,50
<b>VEHICLE</b>	MAN MERCEDES VOLVO DAF SCANIA RENAULT
<b>OEM NO</b>	SK 2521-52



**B14201003**

<b>DESCRIPTION</b>	FIFTH WHEEL BEARING
<b>APPLICATION</b>	JSK 38,50
<b>VEHICLE</b>	MAN MERCEDES VOLVO DAF SCANIA RENAULT
<b>OEM NO</b>	SK 2504-16



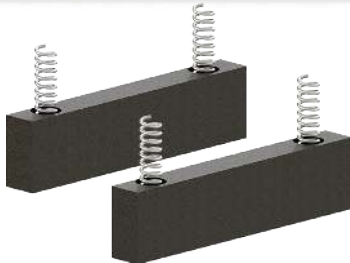
**B14201004**



**B14201005**

<b>DESCRIPTION</b>	FIFTH WHEEL LOCKING LATCH
<b>APPLICATION</b>	JSK 38,50
<b>VEHICLE</b>	MAN MERCEDES VOLVO DAF SCANIA RENAULT
<b>OEM NO</b>	SK 2504-17

<b>DESCRIPTION</b>	FIFTH WHEEL MOUNTING CASTING
<b>APPLICATION</b>	JSK 38,50
<b>VEHICLE</b>	MAN MERCEDES VOLVO DAF SCANIA RENAULT
<b>OEM NO</b>	SK 2506-22



**B14201280**



**B14201007**

<b>DESCRIPTION</b>	FIFTH WHEEL PEDESTAL ARTICULATION
<b>APPLICATION</b>	JSK 38,50
<b>VEHICLE</b>	MAN MERCEDES VOLVO DAF SCANIA RENAULT
<b>OEM NO</b>	SK 2506-35

<b>DESCRIPTION</b>	FIFTH WHEEL BUSHING ARTICULATION
<b>APPLICATION</b>	JSK 38,50
<b>VEHICLE</b>	MAN MERCEDES VOLVO DAF SCANIA RENAULT
<b>OEM NO</b>	SK 2521-18



**B14201008**



**B14201269**

<b>DESCRIPTION</b>	FIFTH WHEEL ARTICULATION PIN
<b>APPLICATION</b>	JSK 38,50
<b>VEHICLE</b>	MAN MERCEDES VOLVO DAF SCANIA RENAULT
<b>OEM NO</b>	SK 2504-21

<b>DESCRIPTION</b>	FIFTH WHEEL LATCH MOUNTING BOLT (M10*70)
<b>APPLICATION</b>	JSK 38,50
<b>VEHICLE</b>	MAN MERCEDES VOLVO DAF SCANIA RENAULT
<b>OEM NO</b>	SK 2421-51





**B14201231**

<b>DESCRIPTION</b>	FIFTH WHEEL MOUNTING PLATES (H150)
<b>APPLICATION</b>	
<b>VEHICLE</b>	
<b>OEM NO</b>	



**B14201235**

<b>DESCRIPTION</b>	FIFTH WHEEL MOUNTING PLATES (H30)
<b>APPLICATION</b>	
<b>VEHICLE</b>	
<b>OEM NO</b>	



**B14201234**

<b>DESCRIPTION</b>	FIFTH WHEEL MOUNTING PLATES (H50)
<b>APPLICATION</b>	
<b>VEHICLE</b>	
<b>OEM NO</b>	



**B14201233**

<b>DESCRIPTION</b>	FIFTH WHEEL MOUNTING PLATES (H70)
<b>APPLICATION</b>	
<b>VEHICLE</b>	
<b>OEM NO</b>	



**B14201232**

<b>DESCRIPTION</b>	FIFTH WHEEL MOUNTING PLATES (H90)
<b>APPLICATION</b>	
<b>VEHICLE</b>	
<b>OEM NO</b>	MP 2102



**B14201026**

<b>DESCRIPTION</b>	FIFTH WHEEL MOUNTING PLATES (FLAT)
<b>APPLICATION</b>	
<b>VEHICLE</b>	
<b>OEM NO</b>	



**B14201131**

<b>DESCRIPTION</b>	KING PIN 3,5"
<b>APPLICATION</b>	JSK 38,50
<b>VEHICLE</b>	MAN MERCEDES VOLVO DAF SCANIA RENAULT
<b>OEM NO</b>	KZ 1412



**B14201132**

<b>DESCRIPTION</b>	KING PIN 3.5" (HEAD)
<b>APPLICATION</b>	JSK 38,50
<b>VEHICLE</b>	MAN MERCEDES VOLVO DAF SCANIA RENAULT
<b>OEM NO</b>	KZ 1412-01



**B14201134**

<b>DESCRIPTION</b>	KING PIN 2"
<b>APPLICATION</b>	JSK 26,36,37,ME 140,42
<b>VEHICLE</b>	MAN MERCEDES VOLVO DAF SCANIA RENAULT
<b>OEM NO</b>	KZ 1012



**B14201135**

<b>DESCRIPTION</b>	KING PIN 2" (HEAD)
<b>APPLICATION</b>	JSK 26,36,37,ME 140,42
<b>VEHICLE</b>	MAN MERCEDES VOLVO DAF SCANIA RENAULT
<b>OEM NO</b>	KZ 1012-01



**B14201136**

<b>DESCRIPTION</b>	KING PIN SPARE PART
<b>APPLICATION</b>	JSK 26,36,37,ME 140,42
<b>VEHICLE</b>	MAN MERCEDES VOLVO DAF SCANIA RENAULT
<b>OEM NO</b>	KZ 1416-02



**B14201137**

<b>DESCRIPTION</b>	KING PIN APPARATUS 3.5"-2"
<b>APPLICATION</b>	JSK 26,36,37,ME 140,42
<b>VEHICLE</b>	
<b>OEM NO</b>	