

**B14201094**

DESCRIPTION Container Lock 50 Mm

OEM NO R 401 VAK

**B14201099**

DESCRIPTION Container Lock Housing

OEM NO 905.294.100

**B14201291**

DESCRIPTION Container Lock Private Type

OEM NO

**B14201095**

DESCRIPTION Container Lock Locking pin

OEM NO 915.000.213

**B14201096**

DESCRIPTION Container Lock Locking nut

OEM NO 915.000.072

**B14201100**

DESCRIPTION Container Lock Outer bush

OEM NO 915.000.160

**B14201097**

DESCRIPTION Container Lock Guide bush

OEM NO 915.000.161

**B14201098**

DESCRIPTION Container Lock Locking ring

OEM NO 915.000.187

**B14201289**

DESCRIPTION Container Lock Pin

OEM NO 905.159.002

**B14201290**

DESCRIPTION Container Lock Latch

OEM NO 915.159.001

**B14201108**

DESCRIPTION Container Lock Medium Type

OEM NO R416VAK

**B14201113**

DESCRIPTION Container Lock Housing

OEM NO 905.248.100

**B14201109**

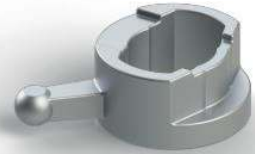
DESCRIPTION Container Lock Locking pin

OEM NO 915.000.137

**B14201110**

DESCRIPTION Container Lock Locking nut

OEM NO 915.000.127

**B14201114**

DESCRIPTION Container Lock Outer bush

OEM NO 915.000.177

**B14201111**

DESCRIPTION Container Lock Guide bush

OEM NO 915.000.178

**B14201112**

DESCRIPTION Container Lock Locking ring

OEM NO 915.000.190

**B14201139**

DESCRIPTION Container Lock Tilting Type

OEM NO FB 89-06 VAV

**B14201140**

DESCRIPTION Container Lock Locking pin

OEM NO 915.000.327

**B14201141**

DESCRIPTION Container Lock Locking nut

OEM NO 915.000.303

**B14201142**

DESCRIPTION Container Lock Lift Type

OEM NO FD 02 SK-RV

**B14201145**

DESCRIPTION Container Lock Spare Part

OEM NO

**B14201144**

DESCRIPTION Container Lock Housing

OEM NO 914.000.216

**B14201143**

DESCRIPTION Container Lock Locking pin

OEM NO 915.000.213



B14201146

DESCRIPTION Container Lock Locking nut

OEM NO 915.000.088



B14201147

DESCRIPTION Container Lock Back Type

OEM NO FD 02 SK-RV



B14201148

DESCRIPTION Container Lock Locking pin

OEM NO 915.000.213



B14201149

DESCRIPTION Container Lock Locking nut

OEM NO 915.000.088



B14201150

DESCRIPTION Container Lock Guide bush

OEM NO 915.000.217



B14201138

DESCRIPTION Container Lock Pipe Lift Type

OEM NO R306VA



B14201095

DESCRIPTION Container Lock Locking pin 50MM - 15CM

OEM NO 915000213



B14201143

DESCRIPTION Container Lock Locking pin 52MM - 17CM

OEM NO 915000213



B14201148

DESCRIPTION Container Lock Locking pin 52MM - 28CM

OEM NO 915000213

DESCRIPTION

OEM NO

DESCRIPTION

OEM NO

DESCRIPTION

OEM NO



B14187000

DESCRIPTION HINGE

DIMENSION PAINTED



B14187003

DESCRIPTION HINGE

DIMENSION U TYPE - PAINTED



B14187006

DESCRIPTION WIDE HINGE SHEET

DIMENSION FOOT - PAINTED



B14187009

DESCRIPTION WIDE HINGE

DIMENSION SHEET - PAINTED



B14187012

DESCRIPTION NEW MODEL HINGE SHEET

DIMENSION FOOT - PAINTED



B14187015

DESCRIPTION NEW MODEL HINGE

DIMENSION SHEET - PAINTED



B14187018

DESCRIPTION HINGE

DIMENSION ZINC PLATED



B14187020

DESCRIPTION HINGE SHEET

DIMENSION FOOT - ZINC PLATED



B14187022

DESCRIPTION SIDEDOOR HINGE

DIMENSION BIG - ZINC PLATED



B14187024

DESCRIPTION SIDEDOOR HINGE

OEM NO SMALL - ZINC PLATED



B14187026

DESCRIPTION SIDEDOOR HINGE

OEM NO BIG 5 mm - PAINTED



B14187029

DESCRIPTION REFRIGERATOR

OEM NO HINGE - PAINTED



B14187032

DESCRIPTION RECESSED DOOR
DIMENSION LOCK - ZINC PLATED



B14187034

DESCRIPTION RECESSED DOOR
DIMENSION LOCK WITH PADLOCK - ZINC PLATED



B14187036

DESCRIPTION RECESSED DOOR
DIMENSION LOCK SMALL - ZINC PLATED



B14187038

DESCRIPTION EXTERNAL
DIMENSION LOCK 27 mm - ZINC PLATED



B14187040

DESCRIPTION EXTERNAL
DIMENSION LOCK 22 mm - ZINC PLATED



B14187042

DESCRIPTION CAM and KEEPER
DIMENSION 27 mm - MATT



B14187045

DESCRIPTION ONE SIDE - ZINC PLATED
DIMENSION 27 mm CAM and KEEPER



B14187051

DESCRIPTION CAM and KEEPER
DIMENSION MATT



B14187053

DESCRIPTION CAM and KEEPER
DIMENSION ZINC PLATED



B14187055

DESCRIPTION DOOR HOLDER
OEM NO MATT



B14187057

DESCRIPTION BIG GUIDE PLATE
OEM NO 27 mm - ZINC PLATED



B14187059

DESCRIPTION SMALL GUIDE PLATE
OEM NO 27 mm - ZINC PLATED



B14187061

DESCRIPTION BIG GUIDE PLATE OLD

DIMENSION TYPE - ZINC PLATED



B14187063

DESCRIPTION SMALL GUIDE PLATE OLD

DIMENSION TYPE - ZINC PLATED



B14187065

DESCRIPTION MEDIUM GUIDE

DIMENSION PLATE - ZINC PLATED



B14187067

DESCRIPTION LEVER RETAINER

DIMENSION ZINC PLATED



B14187069

DESCRIPTION LEVER MOUNT

DIMENSION ZINC PLATED



B14187071

DESCRIPTION PLASTIC LEVER

DIMENSION ZINC PLATED



B14187073

DESCRIPTION PLASTIC LEVER KIT

DIMENSION ZINC PLATED



B14187075

DESCRIPTION LEVER

DIMENSION KIT - ZINC PLATED



B14187077

DESCRIPTION LEVER RETAINER

DIMENSION 22 mm - ZINC PLATED



B14187079

DESCRIPTION LEVER MOUNT

OEM NO 22 mm - ZINC PLATED



B14187081

DESCRIPTION PLASTIC LEVER

OEM NO 22 mm - ZINC PLATED



B14187083

DESCRIPTION PLASTIC LEVER KIT

OEM NO 22 mm - ZINC PLATED

**B14187085**

DESCRIPTION	VENTILATION
DIMENSION	HATCH - ZINC PLATED

**B14187088**

DESCRIPTION	VENTILATION
DIMENSION	ROOF HATCH

**B14187089**

DESCRIPTION	PLASTIC LEVER SET
DIMENSION	27 mm - ZINC PLATED

**B14187091**

DESCRIPTION	PLASTIC LEVER SET
DIMENSION	22 mm - ZINC PLATED

**B14187093**

DESCRIPTION	EXTERNAL LOCK SET
DIMENSION	27 mm - ZINC PLATED

**B14187095**

DESCRIPTION	EXTERNAL LOCK SET
DIMENSION	22 mm - ZINC PLATED

**B14187097**

DESCRIPTION	MEAT HOOK
DIMENSION	SINGLE - ALUMINIUM

**B14187098**

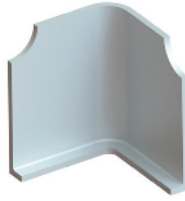
DESCRIPTION	MEAT HOOK ONE
DIMENSION	SIDE - ALUMINIUM

**B14187099**

DESCRIPTION	MEAT HOOK
DIMENSION	DOUBLE - ALUMINIUM

**B14187100**

DESCRIPTION	CORNER
OEM NO	BRACKET - ALUMINIUM

**B14187101**

DESCRIPTION	CORNER LONG
OEM NO	BRACKET - ALUMINIUM

**B14187102**

DESCRIPTION	CORNER
OEM NO	BRACKET - ALUMINIUM

**B14187103**

DESCRIPTION BIG CORNER

DIMENSION BRACKET - ALUMINIUM

**B14187104**

DESCRIPTION MEDIUM OVALE CORNER

DIMENSION BRACKET - ALUMINIUM

**B14187105**

DESCRIPTION SMALL OVALE CORNER

DIMENSION BRACKET - ALUMINIUM

**B14187106**

DESCRIPTION CUBE CORNER

DIMENSION BRACKET - ALUMINIUM

**B14187107**

DESCRIPTION BOTTOM CORNER

DIMENSION BRACKET - ALUMINIUM

**B14187108**

DESCRIPTION MEAT RAIL

DIMENSION BRACKET - ALUMINIUM

**B14187109**

DESCRIPTION MEAT RAIL

DIMENSION BRACKET - ALUMINIUM

**B14187110**

DESCRIPTION MEAT RAIL

DIMENSION BRACKET - ALUMINIUM

**B14187111**

DESCRIPTION CARGO HOLDER

DIMENSION SHEET - ALUMINIUM

**B14189011**

DESCRIPTION CORNER

OEM NO BUFFER - WITH BOLT

**42U1025**

DESCRIPTION B13209007

OEM NO 530x1600

**42U1027**

DESCRIPTION B13209006

OEM NO 620x1750



B13209008

DESCRIPTION	MUDGUARD
DIMENSION	450x2100(Ribboned)



B13209001

DESCRIPTION	MUDGUARD
DIMENSION	450x2100



B13209009

DESCRIPTION	MUDGUARD
DIMENSION	450x2000



B13209005

DESCRIPTION	MUDGUARD
DIMENSION	450x1940



B13209003

DESCRIPTION	MUDGUARD
DIMENSION	450x900



B13209010

DESCRIPTION	MUDGUARD
DIMENSION	675x2100



B13209004

DESCRIPTION	MUDGUARD
DIMENSION	650x1920 (Ribboned)



B13209011

DESCRIPTION	MUDGUARD
DIMENSION	650x1920



B13209000

DESCRIPTION	MUDGUARD
DIMENSION	650x2100



B13209002

DESCRIPTION	MUDGUARD
OEM NO	650x900



B13209012

DESCRIPTION	MUDGUARD
OEM NO	300x1530



B13209013

DESCRIPTION	MUDGUARD
OEM NO	500x1460



B14184500

DESCRIPTION PVC DOOR PROFILE
DIMENSION 19 mm (19,5*19*30 mm)



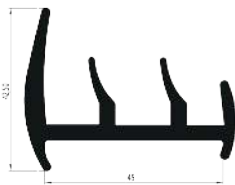
B14184509

DESCRIPTION PVC DOOR PROFILE
DIMENSION 100 mm



B14184510

DESCRIPTION CORNER CONNECTION
DIMENSION



B14184511

DESCRIPTION LP PROFILE
DIMENSION 45 mm



B14184526

DESCRIPTION TOOL BOX
DIMENSION ONE LOCK 400*400*470 mm



B14184527

DESCRIPTION TOOL BOX
DIMENSION ONE LOCK 500*470*470 mm



B14204501

DESCRIPTION TOOL BOX
DIMENSION ONE LOCK 600*470*470 mm



B14184528

DESCRIPTION TOOL BOX
DIMENSION ONE LOCK 700*470*470 mm



B14204500

DESCRIPTION TOOL BOX
DIMENSION DOUBLE LOCK 800*470*470 mm



B14184529

DESCRIPTION TOOL BOX
OEM NO DOUBLE LOCK 1000*470*470 mm



B14184530

DESCRIPTION TOOL BOX
OEM NO THREE LOCK 1200*470*470 mm



B14184531

DESCRIPTION TOOL BOX
OEM NO NEW MODEL 500*300*300 mm



B14184532

DESCRIPTION	TOOL BOX
DIMENSION	NEW MODEL 600*350*350 mm



B14204503

DESCRIPTION	WATER TANK PLASTIC
DIMENSION	30 LT



B14204502

DESCRIPTION	WATER TANK PLASTIC
DIMENSION	50 LT



B14205904

DESCRIPTION	EXTINGUISHER BOX
DIMENSION	



B14204505

DESCRIPTION	CHOCK WHEEL HANGER
DIMENSION	L.420-S.450-H.250



B14205003

DESCRIPTION	MUDGUARD CLAMP - 52MM
DIMENSION	



B14205001

DESCRIPTION	MUDGUARD CLAMP - 42MM
DIMENSION	



B14204506

DESCRIPTION	SPANSET BRACKET
DIMENSION	



B14189012

DESCRIPTION	BUFFER WITH CIRCLE
DIMENSION	THREAD



B14189013

DESCRIPTION	SIDE BUFFER
OEM NO	PVC - 40 cm



B14189014

DESCRIPTION	SIDE BUFFER
OEM NO	PVC - 50 cm



B14189002

DESCRIPTION	SIDE BUFFER RUBBER
OEM NO	40*500*41,5

**B14205911**

DESCRIPTION BUFFER CONICAL

DIMENSION

**B14189003**

DESCRIPTION BUFFER WITH HOLE

DIMENSION

**B14189004**

DESCRIPTION BUFFER WITH BOLT - BIG

DIMENSION WITH BOLT - BIG

**B14189005**

DESCRIPTION BUFFER WITH BOLT - SMALL

DIMENSION WITH BOLT - SMALL

**B14205912**

DESCRIPTION BUFFER

DIMENSION BIG 100*290*74

**B14205914**

DESCRIPTION BUFFER -MEDIUM

DIMENSION 70*245*53

**B14205913**

DESCRIPTION BUFFER -SMALL

DIMENSION 51*235*57

**B14189006**

DESCRIPTION ROLLER BUFFER

DIMENSION SMALL SINGLE

**B14189007**

DESCRIPTION ROLLER BUFFER

DIMENSION SMALL DOUBLE

**B14189008**

DESCRIPTION ROLLER BUFFER

OEM NO BIG SINGLE

**B14189009**

DESCRIPTION ROLLER BUFFER

OEM NO BIG DOUBLE

**B14189010**

DESCRIPTION ROLLER BUFFER

OEM NO BIG DOUBLE - WITH SCREW



B14182008

DESCRIPTION

LED

DIMENSION

LAMP - RED



B14182009

DESCRIPTION

LED

DIMENSION

LAMP - WHITE



B14182010

DESCRIPTION

LED

DIMENSION

LAMP - YELLOW



B14182011

DESCRIPTION

SIDE LED LAMP

DIMENSION



LED WATER PROOF 50 000HRS

B14182012

DESCRIPTION

RECESSED LAMP

DIMENSION



LED WATER PROOF 50 000HRS

B14182013

DESCRIPTION

PLATE LAMP

DIMENSION



B14182014

DESCRIPTION

STOP LAMP

DIMENSION

SMALL



B14182015

DESCRIPTION

REFLECTOR FOR TRAILER

DIMENSION

PLATE



B14182016

DESCRIPTION

REFLECTOR FOR TRAILER

DIMENSION

SELF ADHESIVE



B14182017

DESCRIPTION

REFLECTOR FOR TRUCK

OEM NO

PLATE



B14182018

DESCRIPTION

REFLECTOR FOR TRUCK

OEM NO

SELF ADHESIVE



B14182019

DESCRIPTION

TIR PLATE

OEM NO



B1418200

DESCRIPTION TIR PLATE FOLDABLE

DIMENSION



B1418201

DESCRIPTION REFLECTIVE

DIMENSION TAPE - RED



B1418202

DESCRIPTION REFLECTIVE

DIMENSION TAPE - YELLOW



B1418203

DESCRIPTION REFLECTIVE

DIMENSION TAPE - WHITE



B1418204

DESCRIPTION REFLECTIVE TAPE

DIMENSION SEGMENTED - RED



B1418205

DESCRIPTION REFLECTIVE TAPE

DIMENSION SEGMENTED - WHITE



B1418206

DESCRIPTION REFLECTIVE TAPE

DIMENSION SEGMENTED - YELLOW



B1418207

DESCRIPTION SAFETY WARNINGS

DIMENSION

DESCRIPTION

OEM NO

DESCRIPTION

OEM NO

DESCRIPTION

OEM NO



B14185615

DESCRIPTION HOOK

DIMENSION 8*46*51 mm



B14185619

DESCRIPTION HOOK ZINC PLATED

DIMENSION 8*34*32 mm



B14185623

DESCRIPTION HOOK ZINC BLACK

DIMENSION 8*34*32 mm



B14185627

DESCRIPTION SHEET HOOK ZINC PLATED

DIMENSION



B14185628

DESCRIPTION S HOOK

DIMENSION



B14185629

DESCRIPTION WEDGE SINGLE

DIMENSION



B14185630

DESCRIPTION WEDGE SINGLE WITH LOCK

DIMENSION



B14185631

DESCRIPTION WEDGE DOUBLE

DIMENSION



B14185632

DESCRIPTION WEDGE DOUBLE WITH LOCK

DIMENSION



B14185633

DESCRIPTION ROUND WEDGE SINGLE

OEM NO



B14185634

DESCRIPTION ROUND DOUBLE WEDGE

OEM NO



B14185635

DESCRIPTION WEDGE 5 mm

OEM NO



B14185636

DESCRIPTION NEW MODEL WEDGE

DIMENSION 5 mm



B14185638

DESCRIPTION NEW MODEL WEDGE ZINC PLATED

DIMENSION 6 mm



B14185640

DESCRIPTION ROUND WEDGE

DIMENSION



B14185641

DESCRIPTION MALE

DIMENSION



B14185642

DESCRIPTION MALE ZINC PLATED

DIMENSION



B14185643

DESCRIPTION MALE

DIMENSION



B14185644

DESCRIPTION LONG MALE

DIMENSION 10 cm



B14185648

DESCRIPTION MALE ONE HOLE

DIMENSION



B14185649

DESCRIPTION MALE WITH CONICAL PIN

DIMENSION



B14185650

DESCRIPTION OPEN BOX LOCK SHORT

OEM NO



B14185652

DESCRIPTION OPEN BOX LOCK

OEM NO



B14185653

DESCRIPTION SHEET BAR

OEM NO 45*9 cm



B14185663

DESCRIPTION ACCESSORY FOR SHEET BAR

DIMENSION



B14185665

DESCRIPTION ACCESSORY FOR SHEET BAR

DIMENSION



B14185667

DESCRIPTION BIG SWING

DIMENSION



B14185668

DESCRIPTION SMALL SWING

DIMENSION



B14185669

DESCRIPTION BIG SWING WITH PLATE

DIMENSION



B14185670

DESCRIPTION SMALL SWING WITH PLATE

DIMENSION



B14185671

DESCRIPTION HINGE D TYPE BIG

DIMENSION



B14185674

DESCRIPTION HINGE D TYPE

DIMENSION BIG - 5 mm



B14185676

DESCRIPTION HINGE FOR L TYPE

DIMENSION



B14185677

DESCRIPTION HINGE FOR N TYPE

OEM NO 17,5 mm



B14185680

DESCRIPTION HINGE FOR U TYPE

OEM NO 4 mm



B14185684

DESCRIPTION HINGE

OEM NO 80*23 mm

**B14185687**

DESCRIPTION HINGE WITH BALL

DIMENSION 180*33 mm

**B14185688**

DESCRIPTION HINGE

DIMENSION 230*38 mm

**B14185689**

DESCRIPTION HINGE WITH BALL

DIMENSION 230*38 mm

**B14185690**

DESCRIPTION HINGE

DIMENSION 60*16,5 mm

**B14185691**

DESCRIPTION SHAFT HINGE

DIMENSION 100*180 mm

**B14185698**

DESCRIPTION BIG HINGE

DIMENSION

**B14185699**

DESCRIPTION MEDIUM HINGE

DIMENSION 4 mm

**B14185701**

DESCRIPTION TRAILER HINGE

DIMENSION 3 mm

**B14185702**

DESCRIPTION TRIANGLE HINGE - SMALL

DIMENSION

**B14185703**

DESCRIPTION TRIANGLE HINGE - BIG

OEM NO

**B14185704**

DESCRIPTION VAN HINGE

OEM NO

**B14185705**

DESCRIPTION SHEET HINGE BLACK

OEM NO

4*9*4 cm



B14185710

DESCRIPTION SHEET HINGE ZINC PLATED

DIMENSION 4*9*4 cm



B14185715

DESCRIPTION OPENABLE STEP

DIMENSION



B14185716

DESCRIPTION STEP

DIMENSION



B14185717

DESCRIPTION DOOR HANDLE

DIMENSION



B14185718

DESCRIPTION LOCK NEW MODEL

DIMENSION



B14185719

DESCRIPTION LOCK

DIMENSION



B14185720

DESCRIPTION BIG LOCK

DIMENSION



B14185721

DESCRIPTION SMALL LOCK

DIMENSION



B14185722

DESCRIPTION 5/8 STRETCHER WITH SCREW

DIMENSION



B14185724

DESCRIPTION STRETCHER WITH BUSH

OEM NO



B14185725

DESCRIPTION STRETCHER

OEM NO



B14185726

DESCRIPTION U TYPE STRETCHER

OEM NO



B14185727

DESCRIPTION SERRATED PIPE

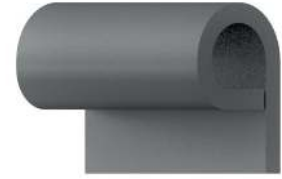
DIMENSION



B14185728

DESCRIPTION STRAIGHT PIPE

DIMENSION



B14185729

DESCRIPTION SMALL PIPE

DIMENSION



B14185730

DESCRIPTION PIPE

DIMENSION 4 cm



B14185736

DESCRIPTION BOX CONNECTION

DIMENSION 22*-*80 mm



B14185751

DESCRIPTION BRACKET

DIMENSION 6 cm



B14185756

DESCRIPTION BIG BRACKET

DIMENSION



B14185758

DESCRIPTION REAR DOOR SPRING

DIMENSION



B14185759

DESCRIPTION SIDE DOOR SPRING

DIMENSION



B14185760

DESCRIPTION SIDE DOOR SPRING WITH SHEET

OEM NO



B14185761

DESCRIPTION TRAILER SPRING

OEM NO



B14185762

DESCRIPTION BRACKET MEDIUM COVER U TYPE

OEM NO

67 cm